

Chapter 1 Introduction

Welcome and thank you for choosing Digital Surveillance System CTV-0102A. It is the perfect security solution for home, office, or other place. You can monitor live camera video indoor, and also view the camera remotely; with the Motion Detection and I/O Alarm, intruder or any suspicious event will be recorded in digital video.

Features:

- Enhanced MPEG-4 Compression Technologies;
- Supports up to 32 Channel Cameras per PC;
- Video & E-Map Display Model;
- Camera Mask:
The Camera can be hid to the User who no view right and the recording video can't be playback too
- Smart Recording Video Search Playback;
- Advanced Motion Detection;
- Networking
Support Multi-Levels Control;
Remote view and control PTZ through LAN, Internet;
Remote talk;
Support IE remote monitor;
- Audio Recording;
- Watermark;
- Watchdog;

Chapter 2 System Requirements

- ✧ Intel Pentium IV CPU or above, AMD Athlon CPU or above, or compatible CPU which supports MMX technologies.
- ✧ 256M system RAM OR above.
- ✧ Display Card: Geforce or ATI chip is recommended.
- ✧ OS: Microsoft Windows 2000 or Windows XP

Chapter 3 Capture Card & Driver Installation

Step 1: Turn off your computer power before installing video capture cards.

Step 2: Install video capture cards in open PCI slots.

Step 3: Turn computer on and Insert the software CD in the CD-ROM drive.

Step 4: Windows will recognize the new hardware as shown.

Step 5: Windows will now prompt you to let it search for the device drivers. This is the preferred method. Please click "Next".

Step 6: Windows XP will find the correct driver on your CD-ROM. (With other versions of Windows you may have to direct it to the folder that corresponds with your Operating System). Select the first driver and click "Next".

Step 7: Windows will then warn you that our driver has not passed Windows Logo Testing. Click "Continue Anyway".

Step 8: Click "Finish".

Step 9: If there is more than one card installed, repeat Step 5 to Step 8 until all drivers have been installed.

To make sure the Hardware Installation was completed properly, please check your Device Manager. You should find the correct number of Device Drivers listed under Sound, Video and Game Controllers before proceeding with Software Installation.

TIP: If Windows does not recognize one or more of your video capture cards, please do the following:

1. Clean the contacts of the video capture board with a clean pencil eraser to remove any residue.
2. If you are still having trouble, try another PCI slot.

Chapter 4 Server Software Installation

Insert the software CD in the CD-ROM drive.

Double-click on the folder of [Server].

Double-click on the s_install icon to begin installation.

After rebooting your computer, you will find a shortcut for the SVDVR program in your "START" menu, listed under "All Programs". You may now run the program as desired.

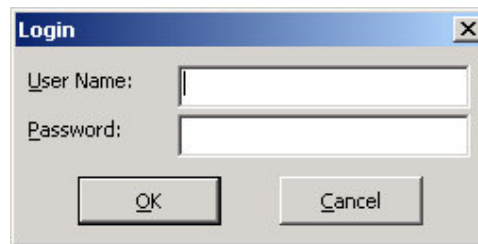
Chapter 5 Server Software Guide



Lanuch SVDVR program,will show this image for seconds:



Then display this dialogue box:(if choose Auto Login at [Setup],will skip this step)



When login ,pleas input User Name & Password

The default User Name: dvr Password: dvr

(Note: The DVR has an Administrator User Name: admin (keeps all rights),
default Password: 1234

It is recommended to change default Password to prevent all user's rights!)

If User Name & Password input correct, Click "OK" to login SVDVR.

◆ Split Screens:

Show live video from cameras & caption;

When drag split screen, the position of split screen can be exchanged;

Show E-Map;

◆ **Display Screen Switch Panel :**

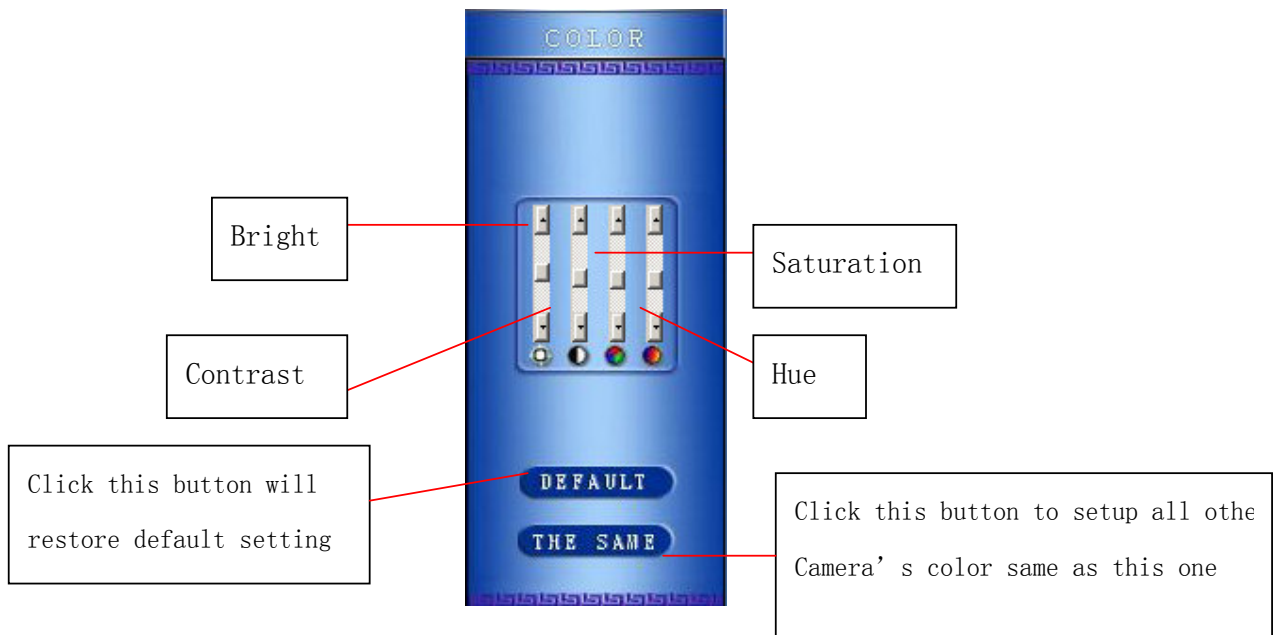
There are 1、4、9、16、25 split screens mode;

Auto Flip;

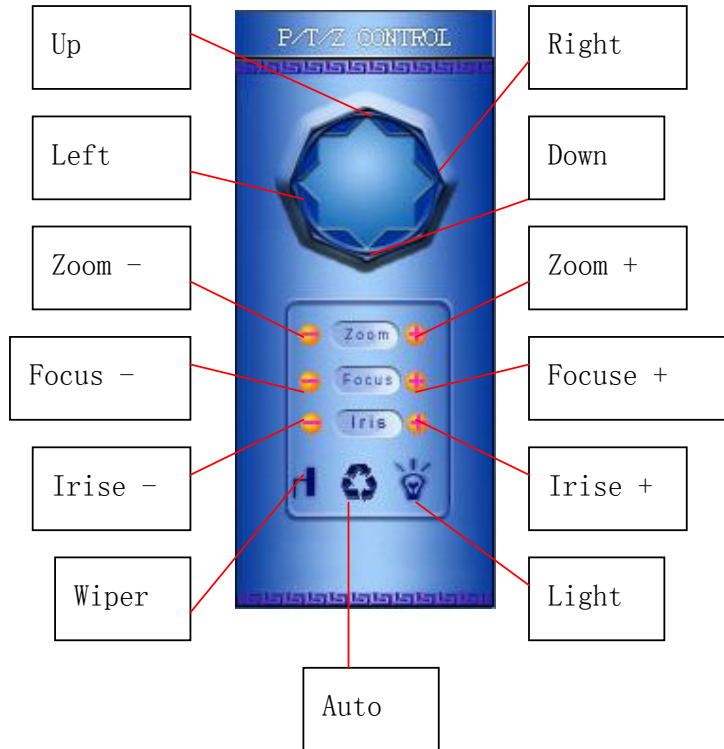
Full Screen;

◆ **Color Adjust :**


Adjustable Bright, Contrast, Hue, Saturation by Individual Camera



◆ **PTZ Control :**



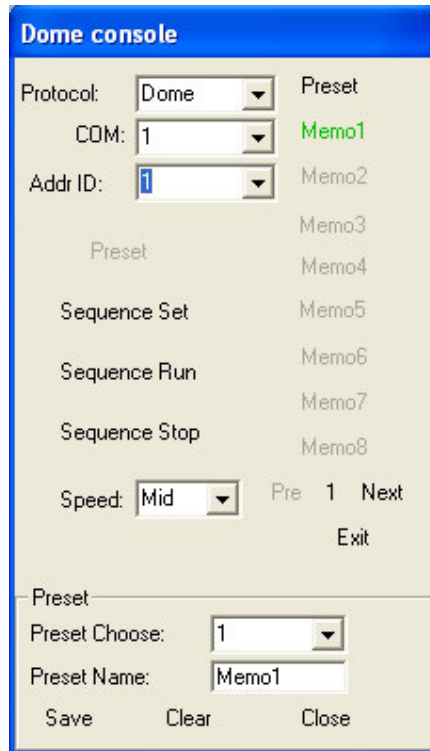
Click the button will allow you to control it' s function

Click  button, to lock screen, the other button in screen cann' t be selected;

To unlock , click this button once more and input correct unlocked password
The default unlocked password: 1234 , you can change this unlocked password at system setup;

◆ **Speed Dome Control Panel :**

Click  button to open Speed Dome control panel



At “Protocol:” to choose the speed dome model from the dropdown menu.

At “COM:” to choose the communication port that your RS232 to RS485 adapter will be using. RS485 adapter connects to your speed dome.

At “Addr ID:” to choose the speed dome ID from the dropdown menu or just click the split screens to get corresponding ID.

“Speed:” choose Speed Dome run speed, High, Middle, Low;

.Click “Preset” to set preset

“Preset Choose:” choose preset number;

“Preset Name:” define preset name;

Control PTZ to move the camera to the your desired place;

Click “Save” to save the preset;

Click “Clear” to clear the preset;

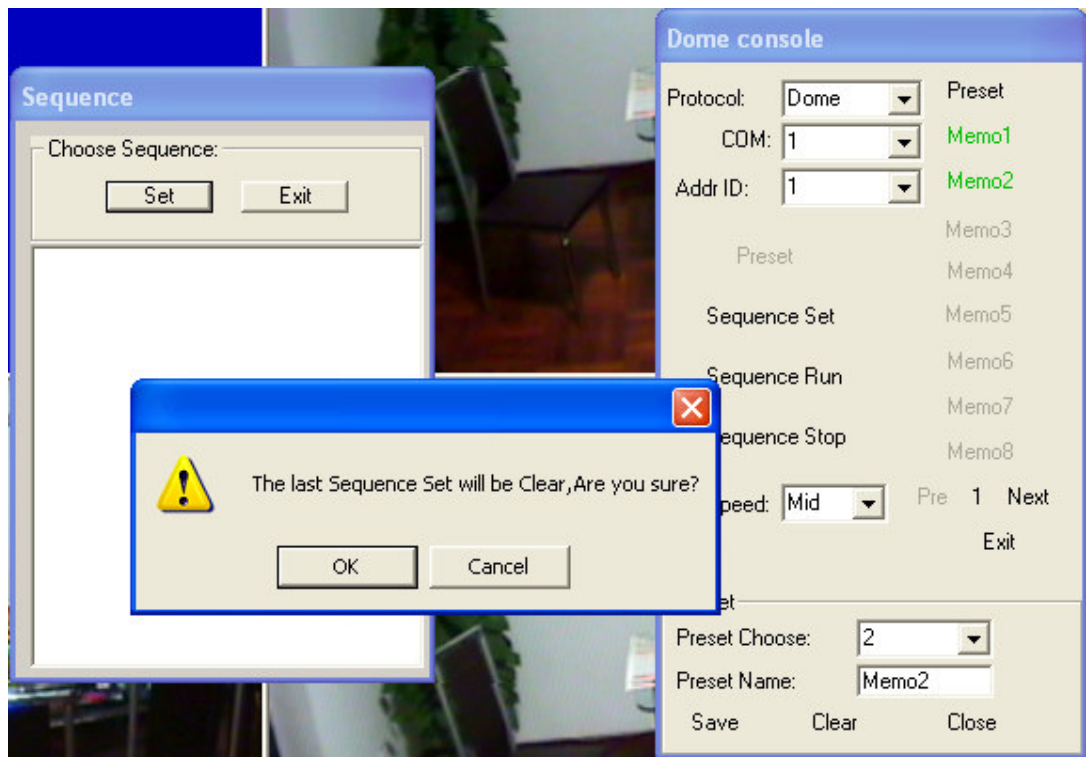
Click “Close” to exit Preset;

The Preset is up to 64;

The Preset will show at panel at green color, click the preset name, the Speed Dome will move to the set place;

By “Pre” and “Next” to find all the preset;

.Click “Sequence Set” to set sequence

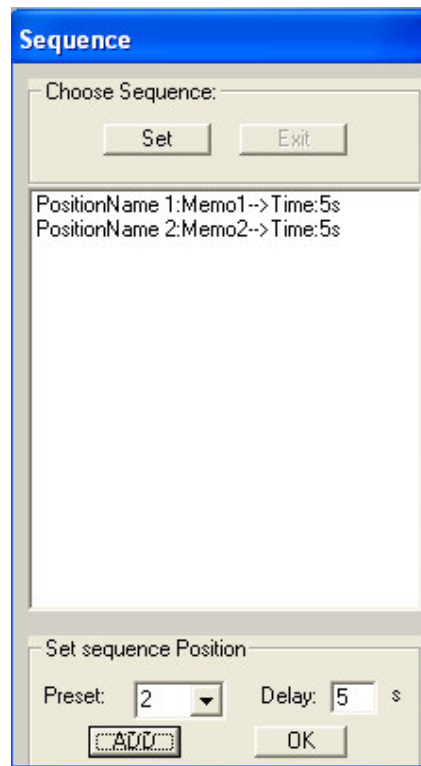


If click “Set” button, will show message box

“The last Sequence Set will be Clear, Are you sure?”

click “ok” to clear all the last sequence set

and set a new sequence set;



“Preset:” choose the preset number ;

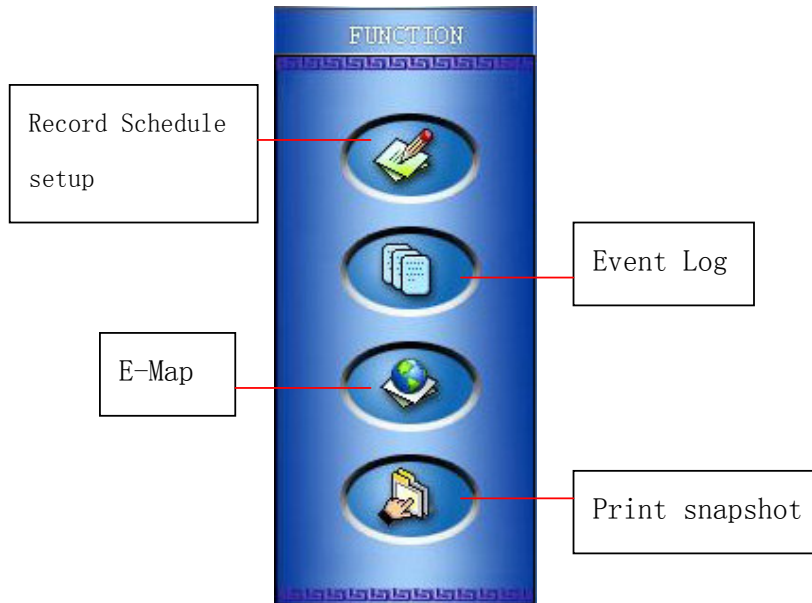
“Delay:” to set delay time, default is 5 seconds

Click “Add” button to add the choosed preset to the sequence;

Click “Sequence Run” to run the sequence;


Click “Sequence Stop” to stop the sequence;


◆ FUNCTION:



◆ Display E-Map Model:



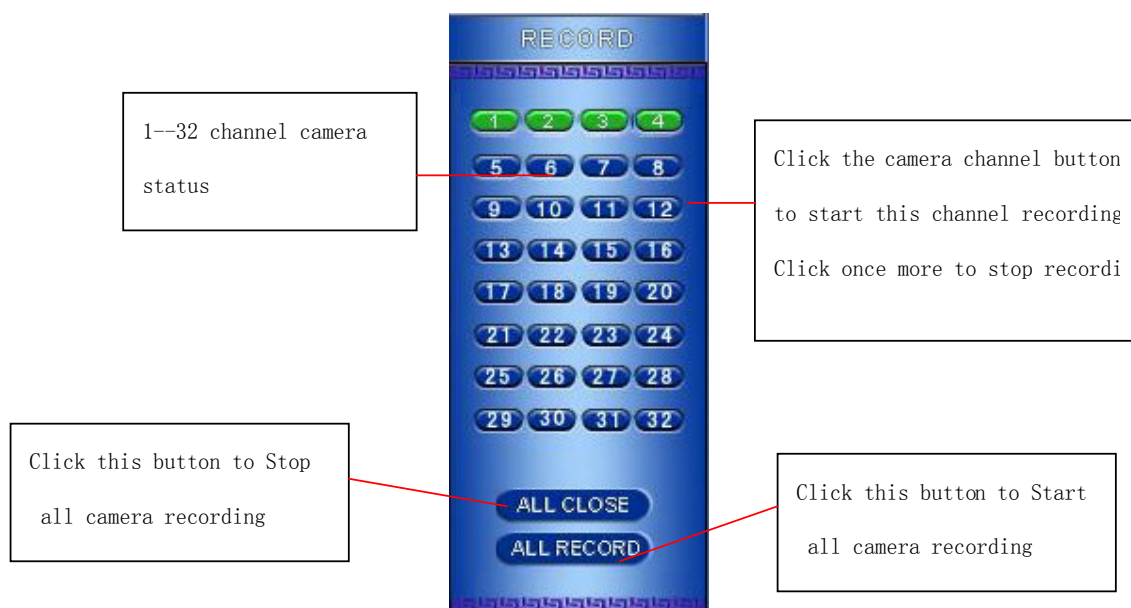
Click  button to switch to show E-Map

Click  button once more to convert to video split screen model

If Motion Detect or I/O Alarm trigger, the corresponding camera caption color will become red & glint!

(glint time is same as alarm delay time set at system setup)

◆ Record:



Camera Status:

Green: the camera is at monitor status;

Red: the camera is at recording status;


Yellow: the camera is at motion detect status;

Purple: the camera is at I/O alarm status;


Red, Yellow glint: the camera is at motion detect status and recording;


Red, Purple glint: the camera is at I/O alarm status and recording;

◆ Control Panel :


Click  button to Log in or Log off;

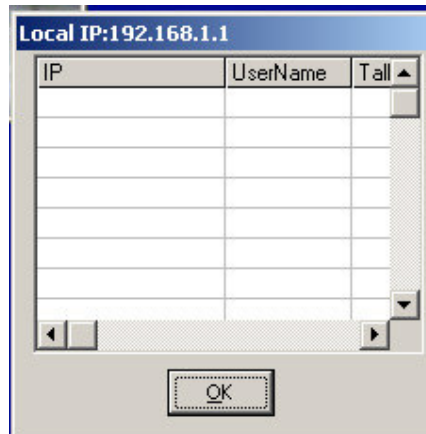
When login success, if click this button once more will log off;

Click  button to snapshot the selected camera, the image save at the SVDVR install directory [Pics] folder

Click  button to show the latest snapshot image and to print.

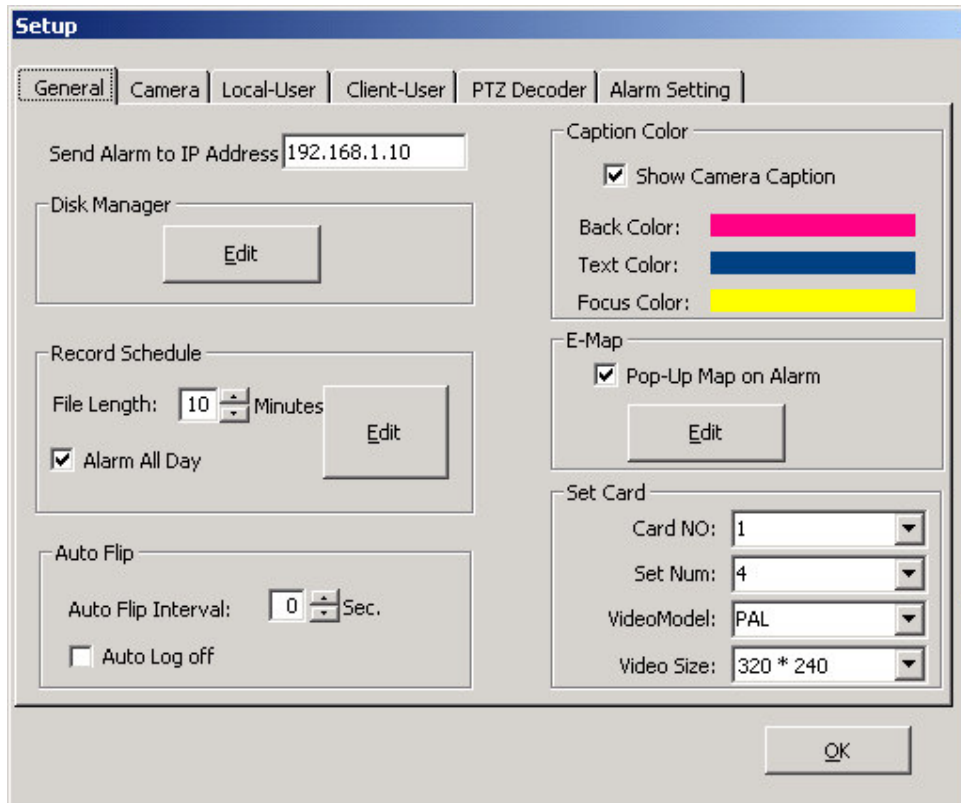
Click  button to playback recorded video files.

If there is remote Client connect to this Server, click  button will show remote Client' s PC IP.



System Setup

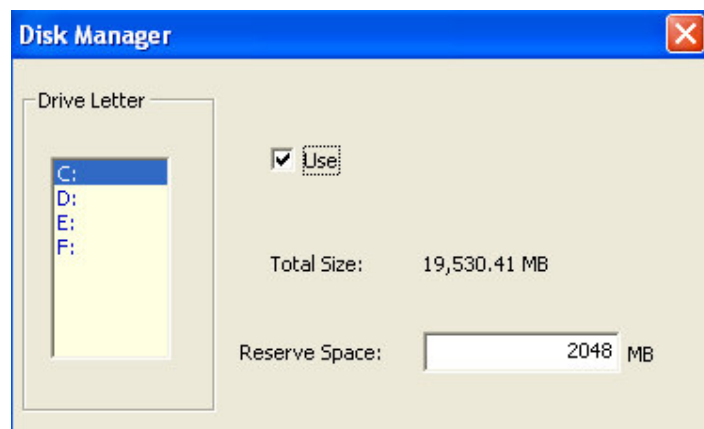
Click **SETUP** button to enter system setup



- **General:**

- ◇ **Disk Manager**

Click “Edit” button , shows dialogue box like this:



Select hard disk drivers to record which Putting a check in Used box;
Reserve Space: when remaining hard disk free space equal this setting,
the recording will be overwrite, the default setting is: 2048MB.

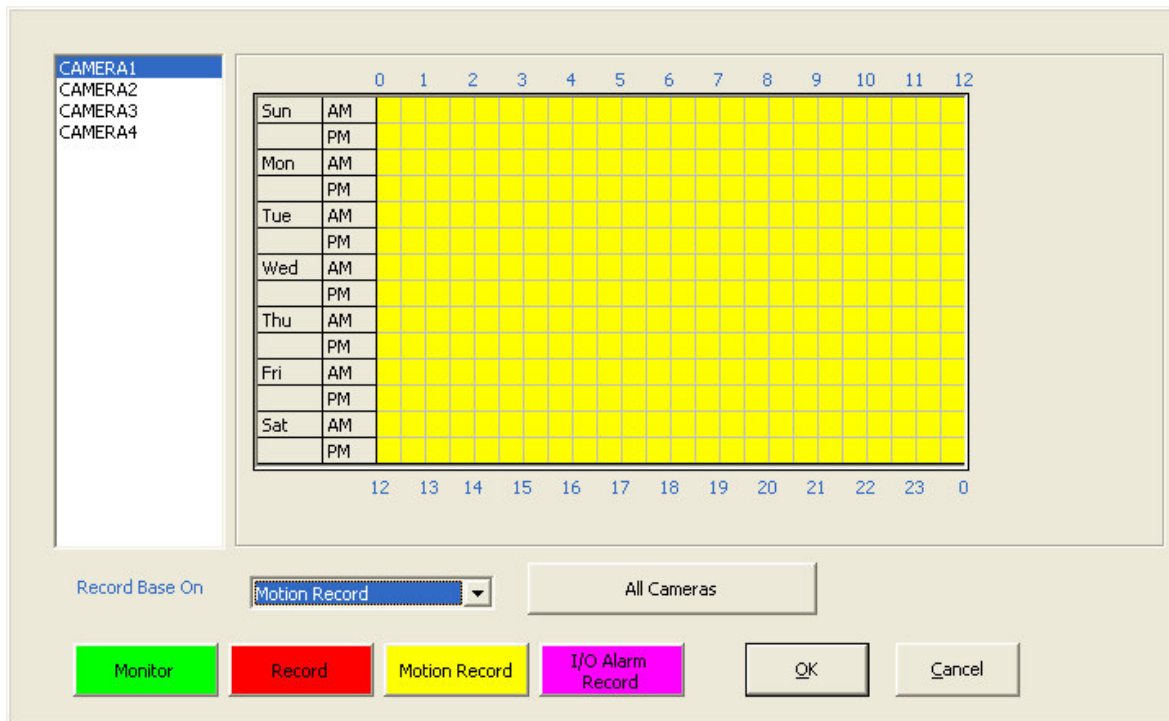
✧ **Record Schedule:**

File Length: the one recording file's Max time default time: 10minutes;

Alarm all day: when select this item, no matter what the status of record
base on is, if I/O Alarm trigger, will record;

When deselect this item, if I/O Alarm trigger, only when
the status of record base on is I/O Alarm, will record;

Click "Edit" button to setup record schedule



You can set up schedule and status of individual camera or all from Sunday to Saturday, 00:00 to 24:00 every half of hour;

. Record Base On:

Choose status of camera from this dropdown menu

“Monitor” : 24 hours a day and every week as monitor status;

“Record”: 24 hours a day and every week as record status;

“Motion Record”: 24 hours a day and every week as record only if motion is detected status;

“I/O Alarm Record”: 24 hours a day and every week as I/O Alarm trigger the camera to record;

“Bank Record ”: from 8:00 AM to 6:00 PM every week as “Record” status, the other time as “Monitor” status;

. The Means of Color:

Green: at the time as “Monitor” status;

Red: at the time as “Record” status;

Yellow: at the time as “Montion Record” status;

Purple: at the time as “I/O Alarm Record” status;

After set up one camera schedule & status, if the other cameras have same schedule & status, will get just clicking “All Cameras” button ;

Click “ok” to save the setup, or click “Cancel” button to cancel.

✧ **Auto Flip:**

Auto Flip Interval: if select 0 second, not auto flip;

Auto Log off: if putinng checkin this box, the current user will be auto log off 5 minutes later all the cameras display on screen will be hid, but the schedule & status not changed;

.Caption Color:

Show Camera Caption: if putinng check in this box will show the camera

caption on split screen;

Back Color: the background color of Caption;

Text Color: the text color of Caption;

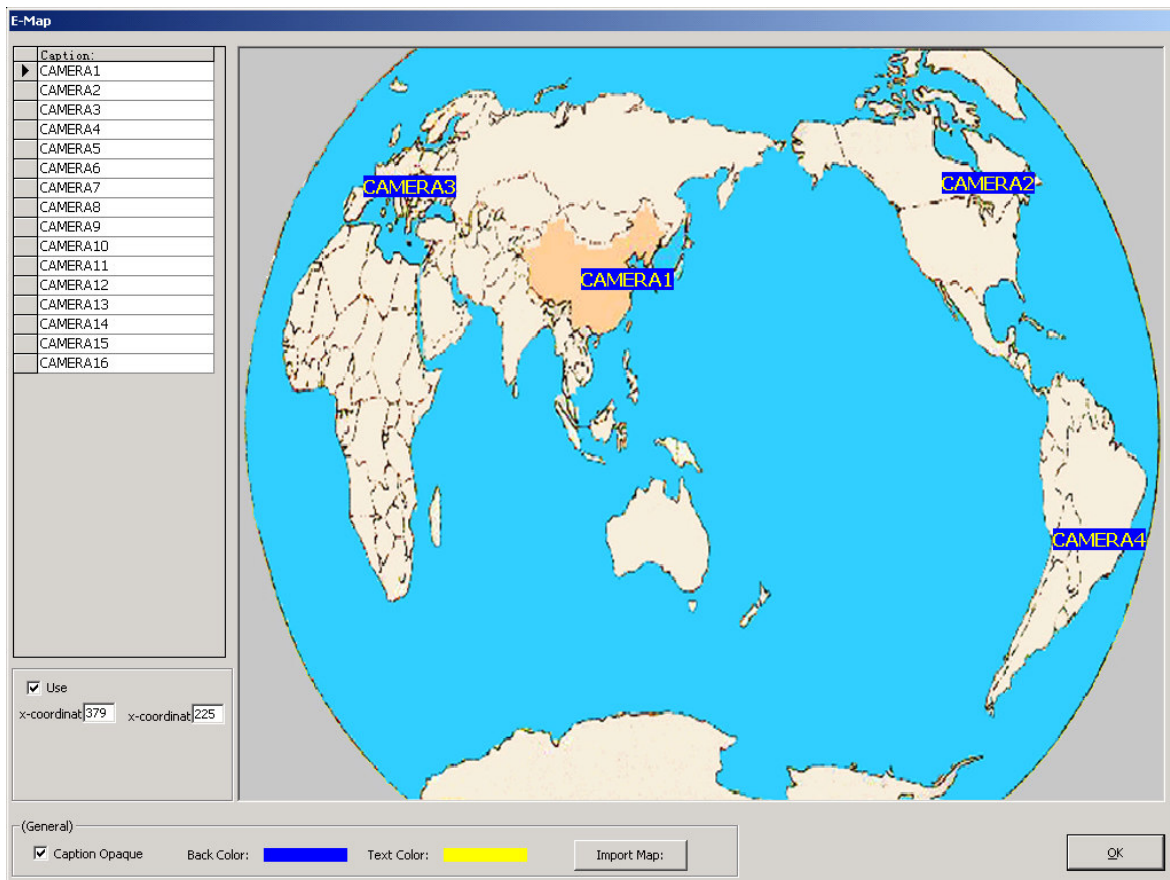
Focus Color: when the camera be selected, the background color of Caption;

Click the color bar to change the corresponding color.

. E-Map:

Pop_up map on alarm: if putting check in this box, the E-Map will show when I/O alarm trigger ;

Click “Edit” button to edit the e-map



Select a camera at Caption, if let the camera show on map, just put check in the “Use” box;

Press the left button of mouse to drag the camera Caption on map to your desired

place;

Caption Opaque: putting check in this box, will show the caption background color;

Back Color: the background color of Caption;

Text Color: the text color of Caption;

Click “Import Map” button to replace map image,

The map image must be : bmp、 jpeg , image size : 800X600 Pixes

.Set Card:

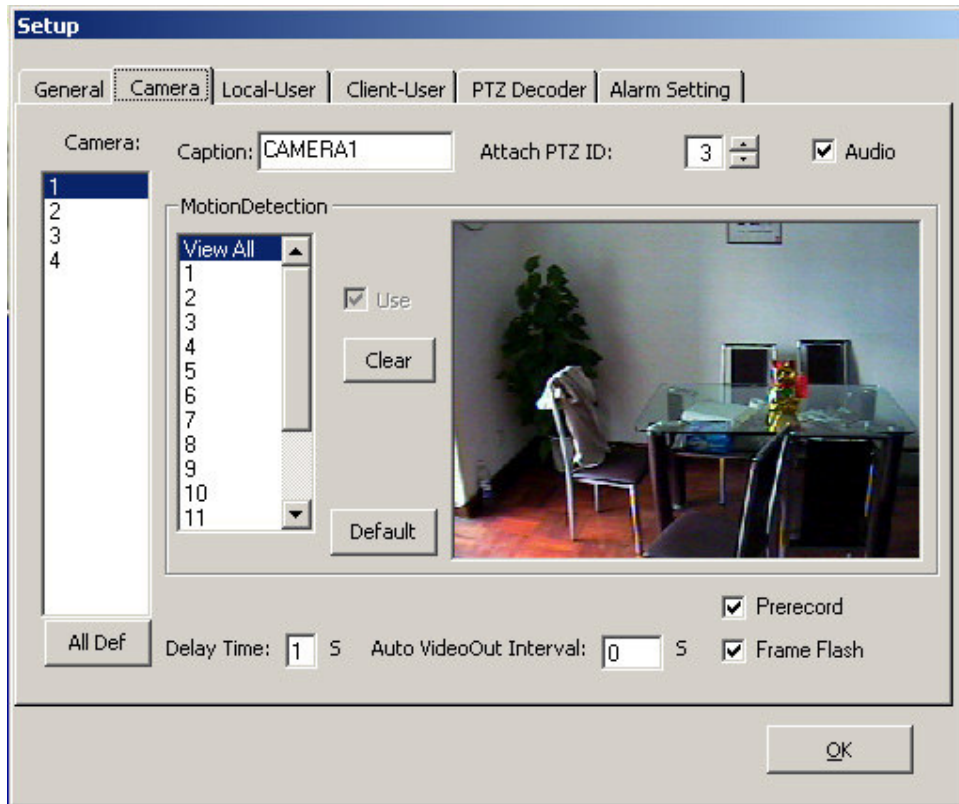
Card No. : choose the card number from dropdown menu;

Set Num: one XV-100 card, support 1 to 4 cameras, you can set the numbers of camera which connect to one card at here;

Video Model: you can choose the camera' s format : PAL or NTSC

Video Size: Default is 320 X 240

- Camera



Camera: select the camera number to set up;

Caption: define the camera' s title;

Attch PTZ ID: choose corresponding PTZ decoder ID;

Audio: putting check in this box will record 2 channel audio which input from audio card (left & right channel) corresponding to camera number 1 and number 2 ;

Motion Detection :

Select a camera number and click "ViewAll" to show all drawing Zone;
Select Zone number from 1 to 16, you can draw up to 16 individual zones.
Draw zones by clicking on the picture and dragging with the left mouse button.

Putting check in "Use" box to enable the zone.

As you enable zones, be sure to set the sensitivity for each zone to

meet your specific needs.

Click “Clear” button to clear the drawing Zone.

sensitivity: the sensitivity rate from 1 to 100, 1 is most sensitive;

Delay Time: delay recording time after Motion Detection or I/O Alarm trigger stop, the default time is 1 minute;

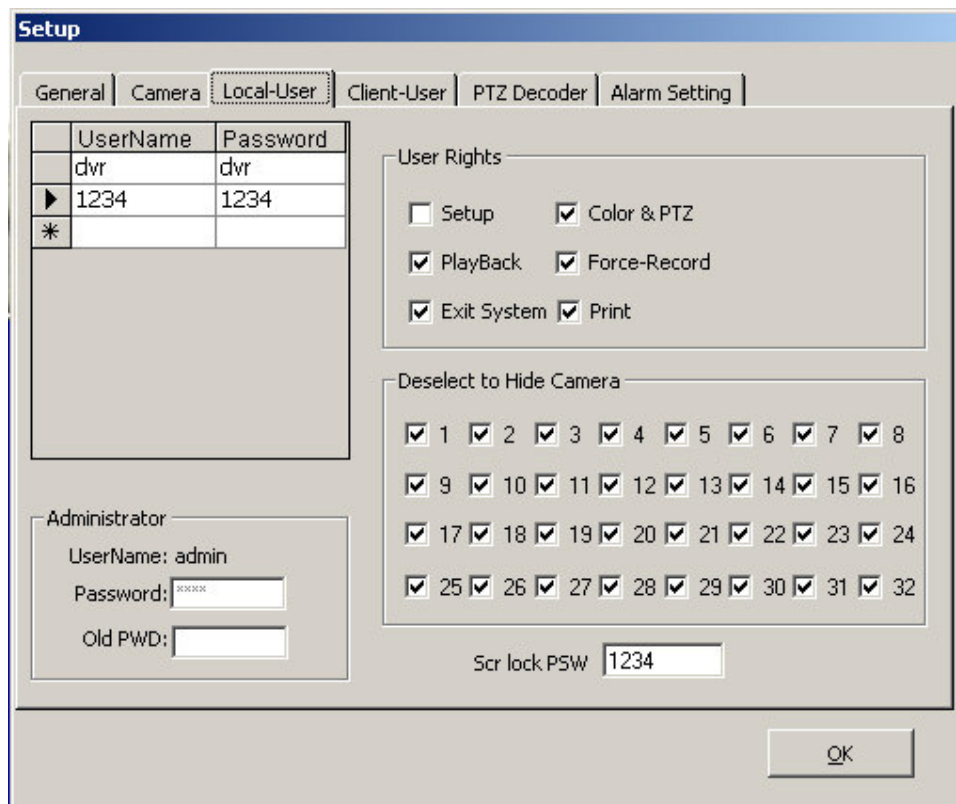
Auto VideoOut Interval: Camera analog video output to monitor/TV interval if set as 0 s, will no analog video output.

This function need card support(optional purchase).

Pre record: Choose this function will pre_record when Motion Detection trigger.

Frame flash: when choose this function, the green frame (motion detection Zone) will glint.

- Local User



Administrator:

User Name: admin

Default Password: 1234 ;

If input correct Password at “Old PWD:”, you can change a new password at “Password:”;

At User Name ,you can add, delet and modify user;

User Rights:

Select a user , you can modify the user rights by putting check in/off corresponding box;

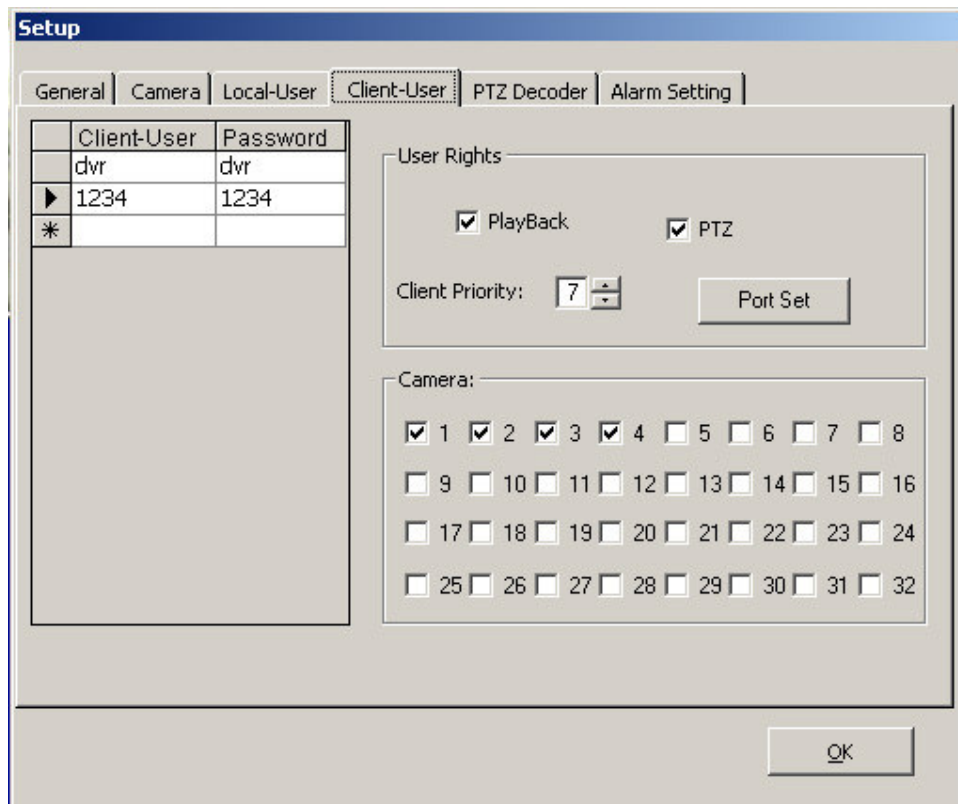
Deselect to Hide Camera:

If deselect the User’ s camera number, the corresponding video will not show on split screen, but the camera schedual & status not changed; When this User login , he/shæann’ t view the hide camera’ s recording

playback;

Scr lock PSW: set screen unlock password, default password is: 1234;

- **Client User:**



At left side “Client -User, Password”, You can add, delet and modify Client-User & Password;

User Rights:

If select Playback, the Client -User can view Server’ s camera recording files remotely;

If select PTZ, the Client -User can control Server’ s camera PTZ

remotely;

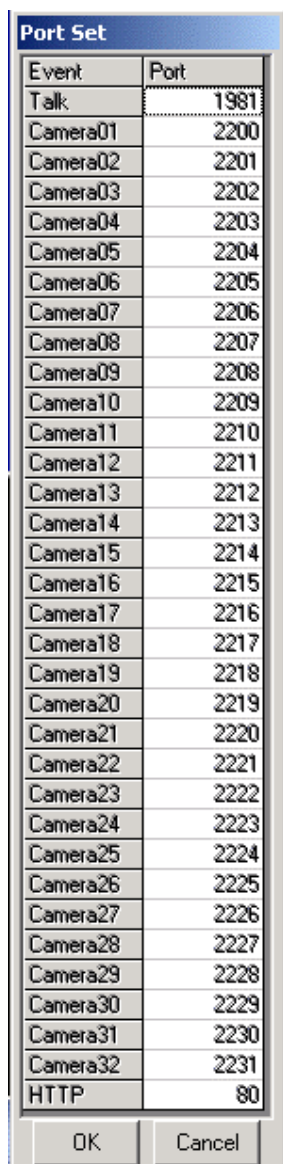
Camera:

If select the camera number, the Client -User can view this camera
remotely;

Client priority:

From 1 - 7, 1 is super, 7 is lowest;

Port Set:



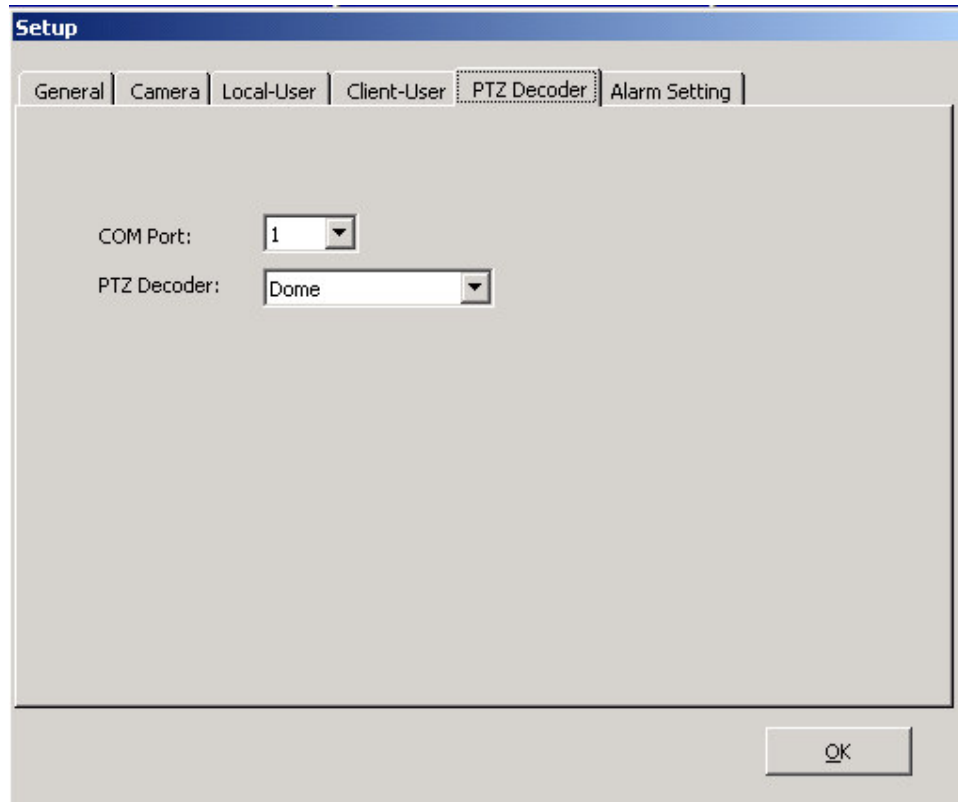
Event	Port
Talk	1981
Camera01	2200
Camera02	2201
Camera03	2202
Camera04	2203
Camera05	2204
Camera06	2205
Camera07	2206
Camera08	2207
Camera09	2208
Camera10	2209
Camera11	2210
Camera12	2211
Camera13	2212
Camera14	2213
Camera15	2214
Camera16	2215
Camera17	2216
Camera18	2217
Camera19	2218
Camera20	2219
Camera21	2220
Camera22	2221
Camera23	2222
Camera24	2223
Camera25	2224
Camera26	2225
Camera27	2226
Camera28	2227
Camera29	2228
Camera30	2229
Camera31	2230
Camera32	2231
HTTP	80

The Ports of Camera video transport (Default): from 2200 to 2231;

The Port of talk[Audio] (Default): 1981; HTTP(default port): 80

You can edit & modify these Ports if necessary.

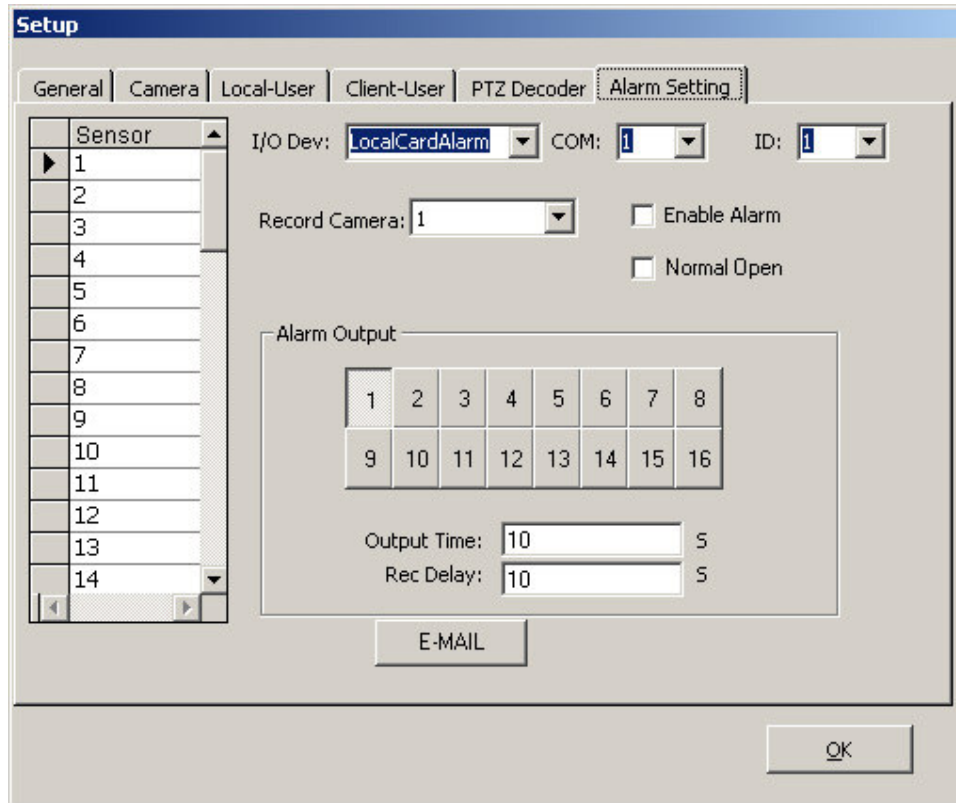
- **PTZ Decoder:**



COM Port: Choose the communication port that your RS232 to RS485 adapter used, RS485 adapter connects to your PTZ decoder.

PTZ Decoder: Choose the model or brand of your decoder from the dropdown menu. If your model is not listed, please send the decoder protocol to us, we'll add it for you.

- Alarm Setting:



I/O Dev:

dv7608 is a alarm box connect to the COM port(optional purchase)

Local Card Alarm xv-100 card support 8channel alarm input and 4channel alarm output (the input/output interface board optional purchase)

COM, ID Config for **dv7608**;

Sensor: choose sensor number at here to config;

Record Camera: when sensor trigger, the corresponding record camera number config at here;

Enable Alarm: putting check in box to enable alarm function;

Normal Open: choose this function , if sensor input is low TTL, start alarm
Not choose this function, if sensor input is high TTL, start alarm;

Alarm Output: when sensor trigger,choose corresponding Alarm output number

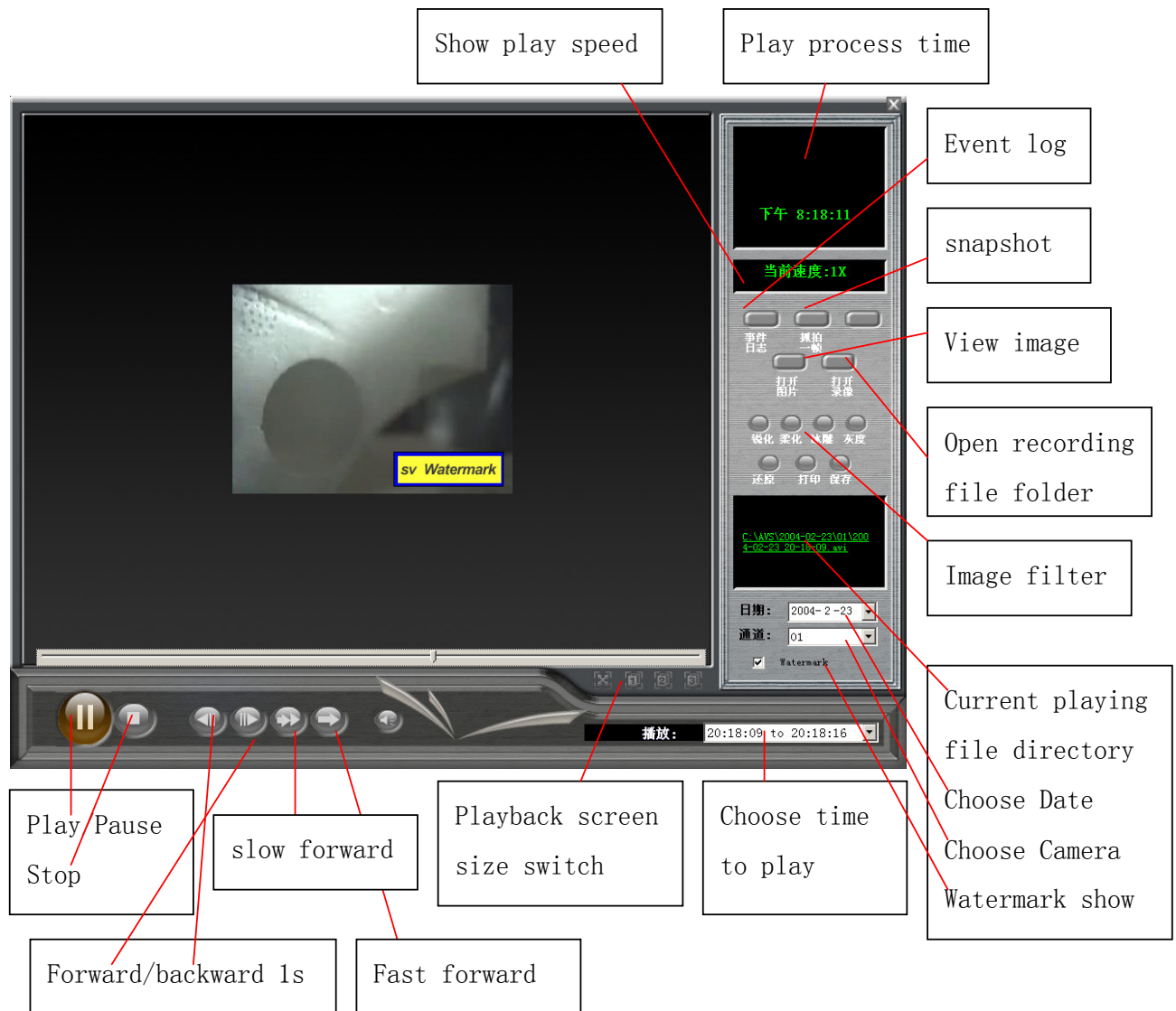
at here;

Output Time: when sensor trigger, the corresponding alarm output delay time;

Rec Time: when sensor trigger, the corresponding camera record delay time;

Playback

Click **PLAYBACK** button to playback

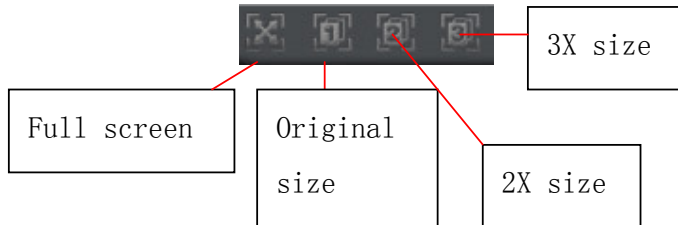



Date: choose date from dropdown menu;

Channel: choose camera number;


Play: choose time to play;

Playback Screen Size Panel:




Click  button to fast forward play, click the button one time to speed up one level, there are 3 level 2X, 4X, 8X;




Click  button to slow forward play, click the button one time to speed up one level, there are 3 level 1/2X, 1/4X, 1/8X;



Click  button to forward 1 second;



Click  button to backward 1 second;

Click “Snap” button to snapshot the playback, the image save at the SVDVR install directory [Pics] folder;

Click “View BMP” button to view the snapshot images;

Click “Play video” button to play other AVI files;

Click the “Current playing file directory” to backup recording files;

Image Filter:

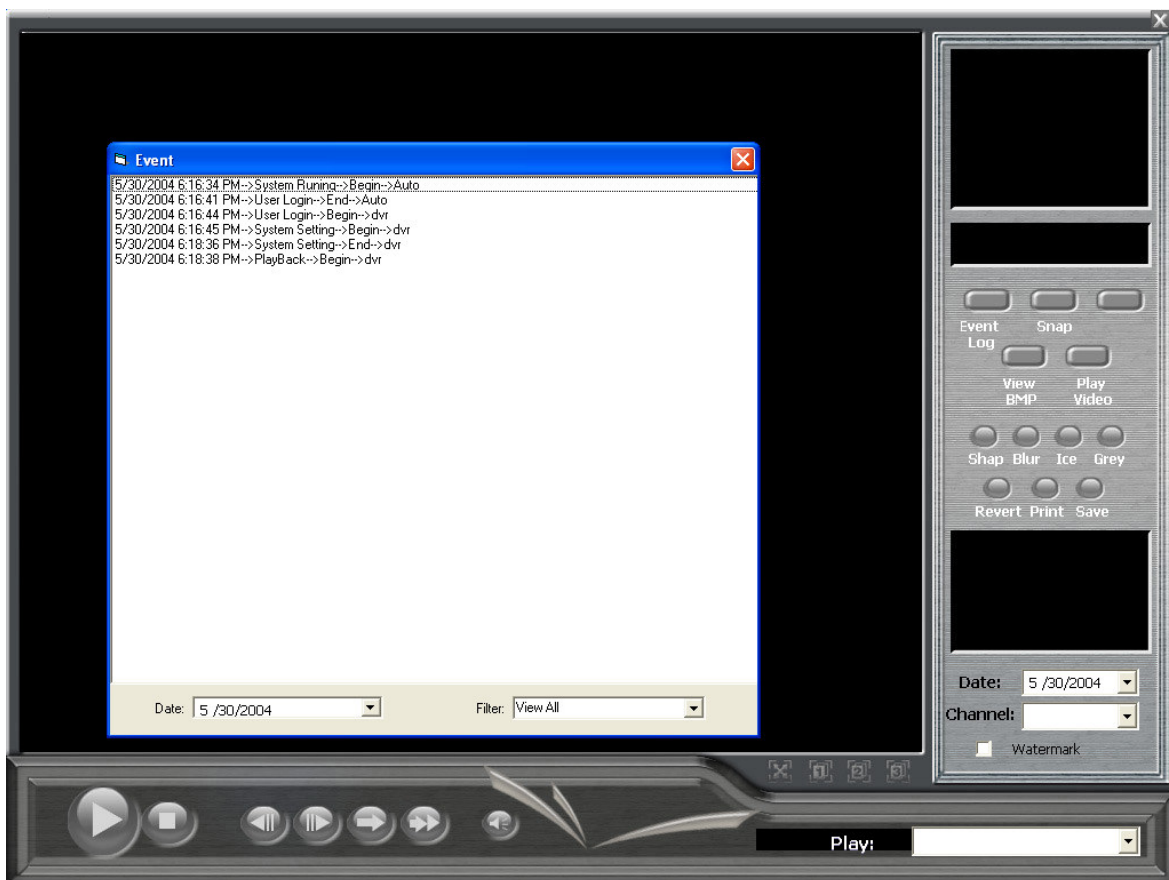
When view a image, you can process image by “sharp”, “Blur”, “Ice”, “Grey” ;

Click “Revert” to undo;

Click “Print” to print;

Click “Save” to save the image;

Event Log:



Event Log record all the system run status, you can view the log by Date,Filter;
Select “watermark”, the watermark will show on screen



Chapter 6 **Client Software**

Client Software allows you to view remote camera, control remote PTZ, even playback remote camera recording files. Support Lan, internet network.

Client Software Installation:

Insert the software CD in the CD-ROM drive.

Double-click on the folder of [Client].

Double-click on the c_install icon to begin installation.

After rebooting your computer, you will find a shortcut for the Clenr program in your “START” menu, listed under “All Programs”. You may now run the program as desired.

Client Software Guide:

Run Client program, will show this box first.



Login

User Name: dvr

Password: ***

OK Cancel Modify

Save UserPSW

User Name: default is: dvr

Password: default is: dvr

This User Name & Password prevent the client program not be run by others;

Click “Modify” button, You can modify the User Name & Password personally,



Login

User Name: dvr

Password: ***

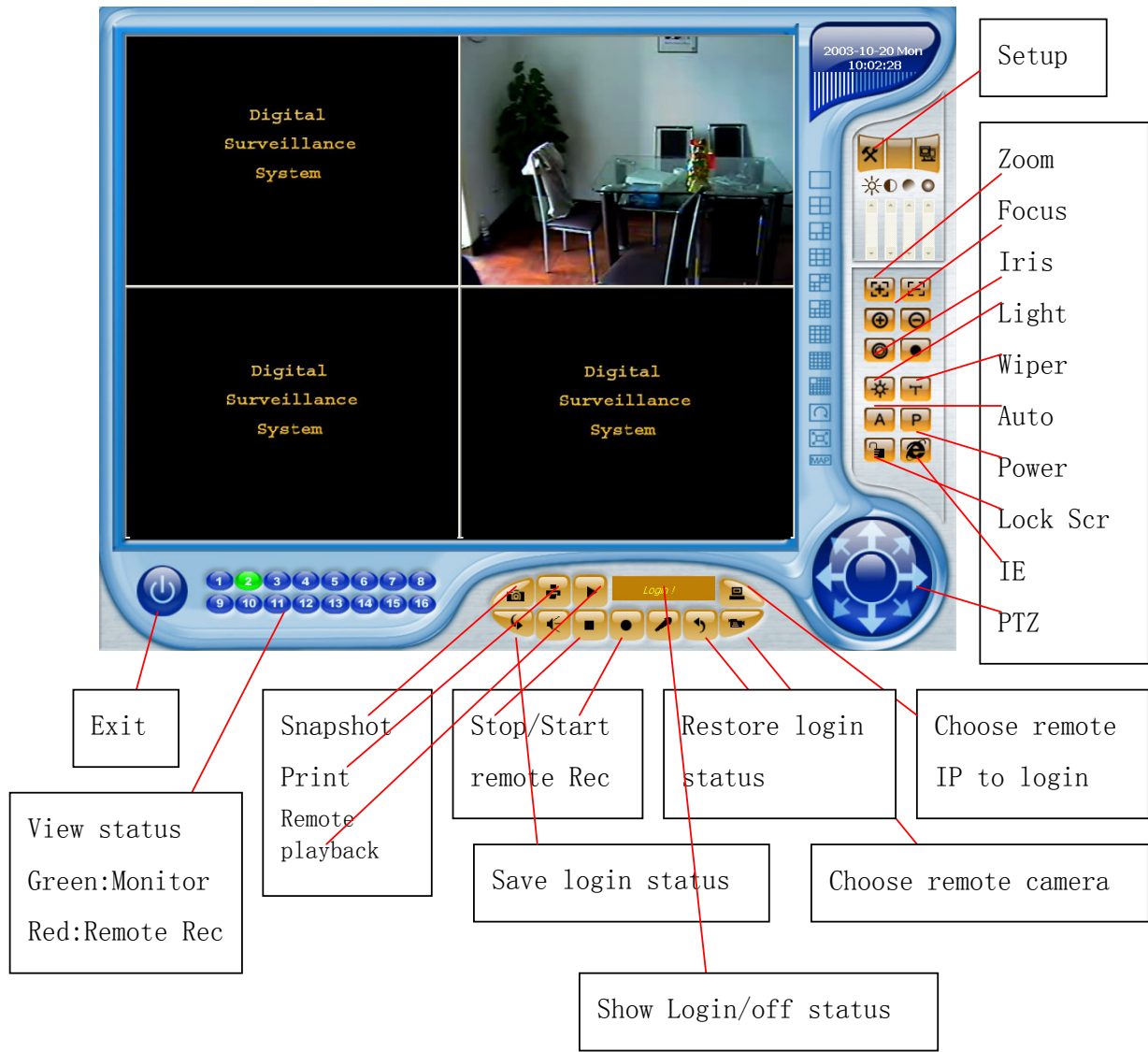
OK Cancel OK

Save UserPSW

User Name:

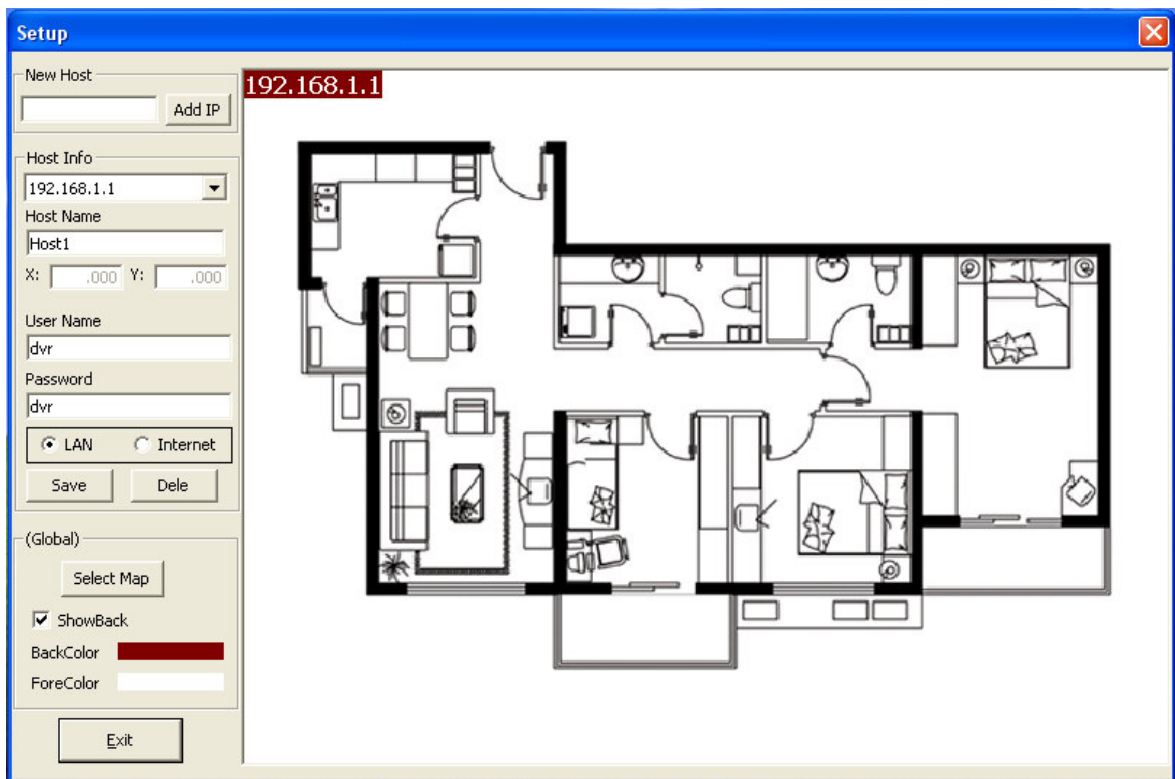
Password:

Client GUI:



Setup:

Click “Setup” button to setup system;



New Host:

Input Server' s PC IP, then click “Add IP” to add new remote Server;

Host Info:

Choose remote Server IP from dropdown menu to edit;

Host Name:

To define remote server name which will show on video box title;

User Name & Password:

The User Name & Password which input at here must be defined in Client-User of remote Server' s Setup;

Default is:

User Name: dvr ; Password: dvr

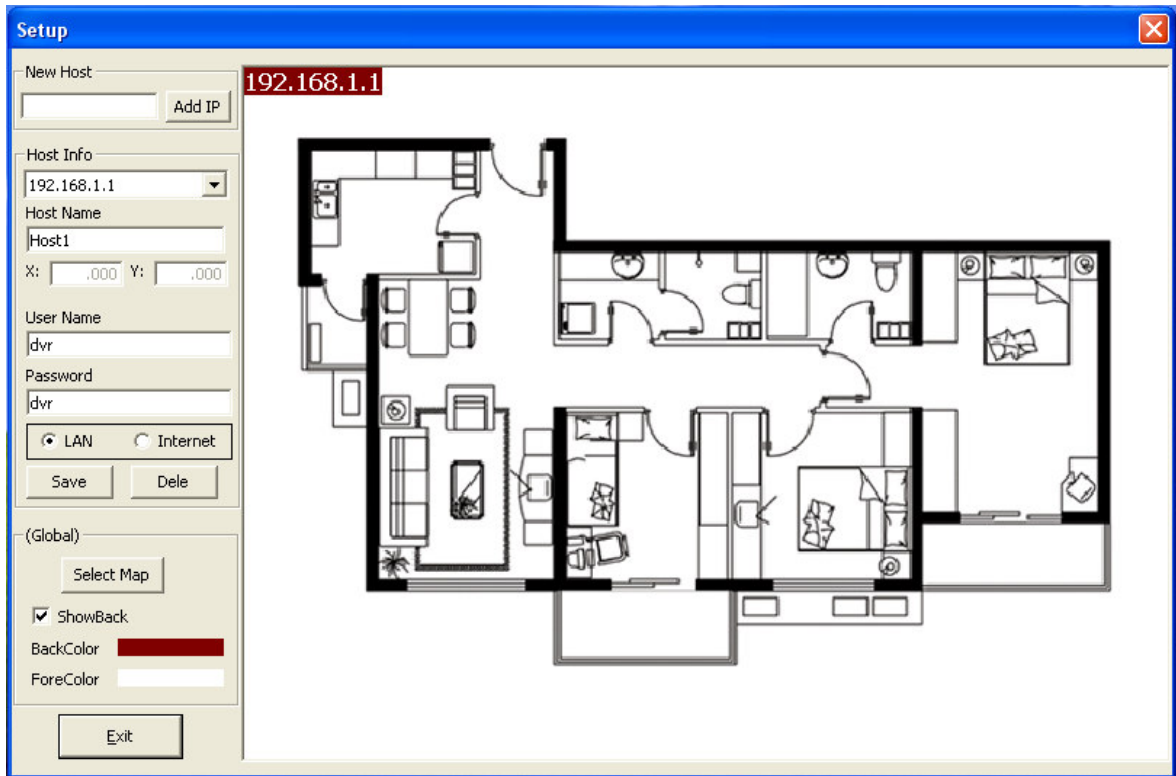
Click “Save” to save the setup;

Click “Dele” to delete the selected server setup information;

Client software support E-Map login;

Click “Select Map” to import map image;

Dragging Server IP to the corresponding place;



Click “Exit” button to exit;



Click button to choose the Server IP which you want to log in;

If login ok, the “Show Login/off status” panel will show “Login Success!” ;

If login failure, panel will show “Login Fail!” ;



Click button to choose the camera which you want to view;

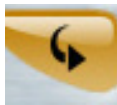


Click button to record at client site;



Click button to stop recording at client site;

Click “PTZ” button to control remote PTZ;



Click button to save the current login status;

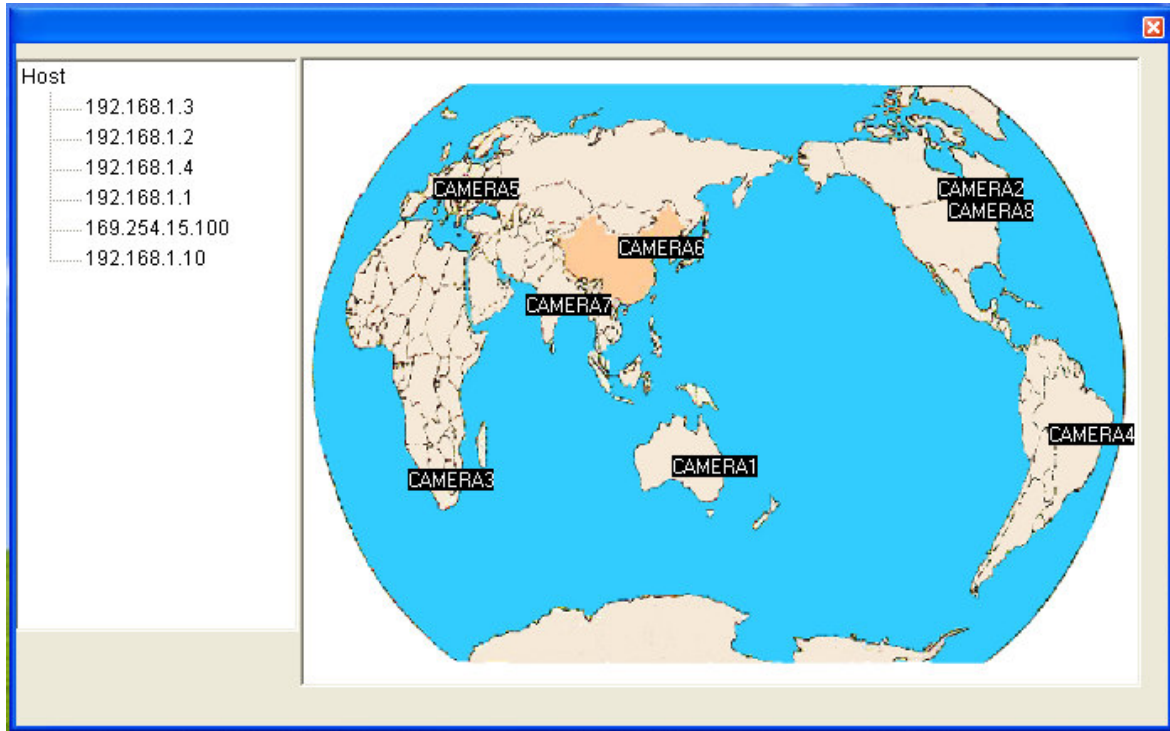



When logoff , click button to recall the last login status and automatically login;

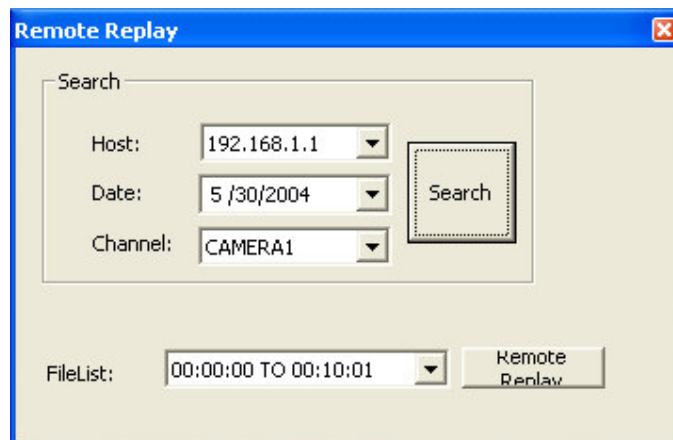


Click button to login from E-Map;

Click the Server IP on map, will auto login, then click the camera number will show the corresponding video;



Click  button to playback the recording of remote Server;



Host: choose the remote Server IP;

Date: select the date;

Channel: choose the camera number;

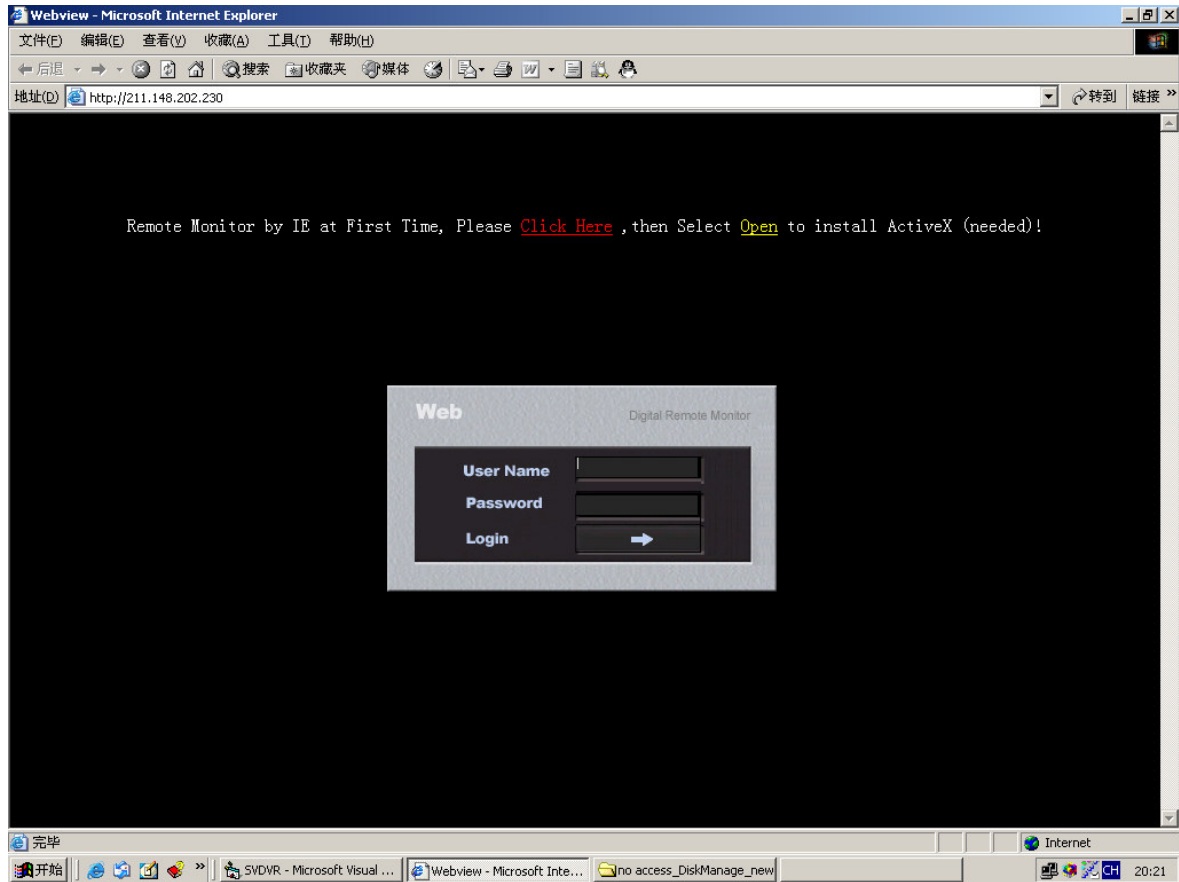
Click “Search” button to find, if getting, the files name will show at “FileList” ;

Choose the file , then click “Replay” button to play;

Putting mouse at the video for seconds will show the video information(Server IP & Camera number).

Internet Explorer remote view:

Please input the server’ s IP at URL of internet explorer,



if first time view by IE, please click “ [click here](#)” to install ActiveX..

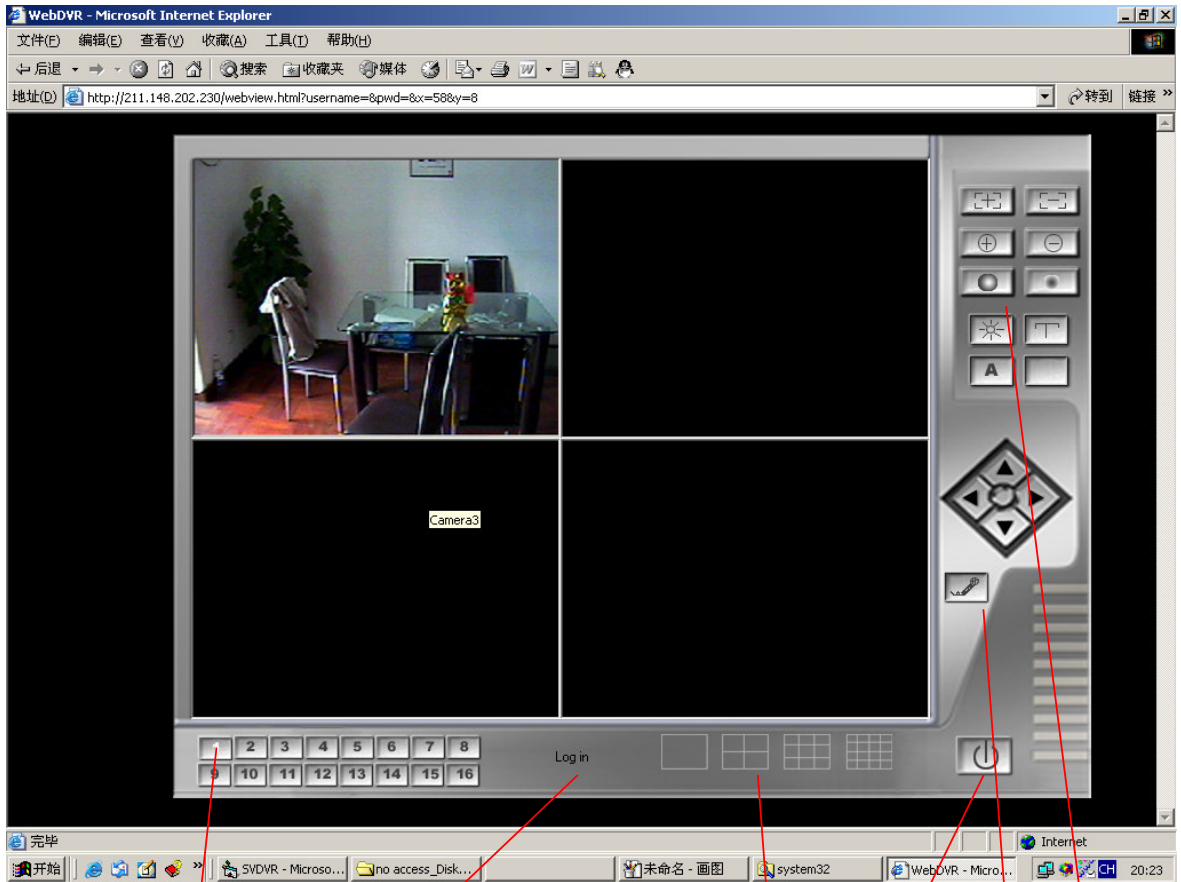
Note:

Internet Explorer **Security Level** must be setup as **Low**,
otherwise you maybe login success, but can't view the video!

User Name & Password:

The User Name & Password which input at here must be defined in Clientser
of remote Server' s Setup.

Click “Login” to log in.



If login success, will show "log in" at here

Exit

talk

click camera number to view remote video which you desired

Split screen

PTZ